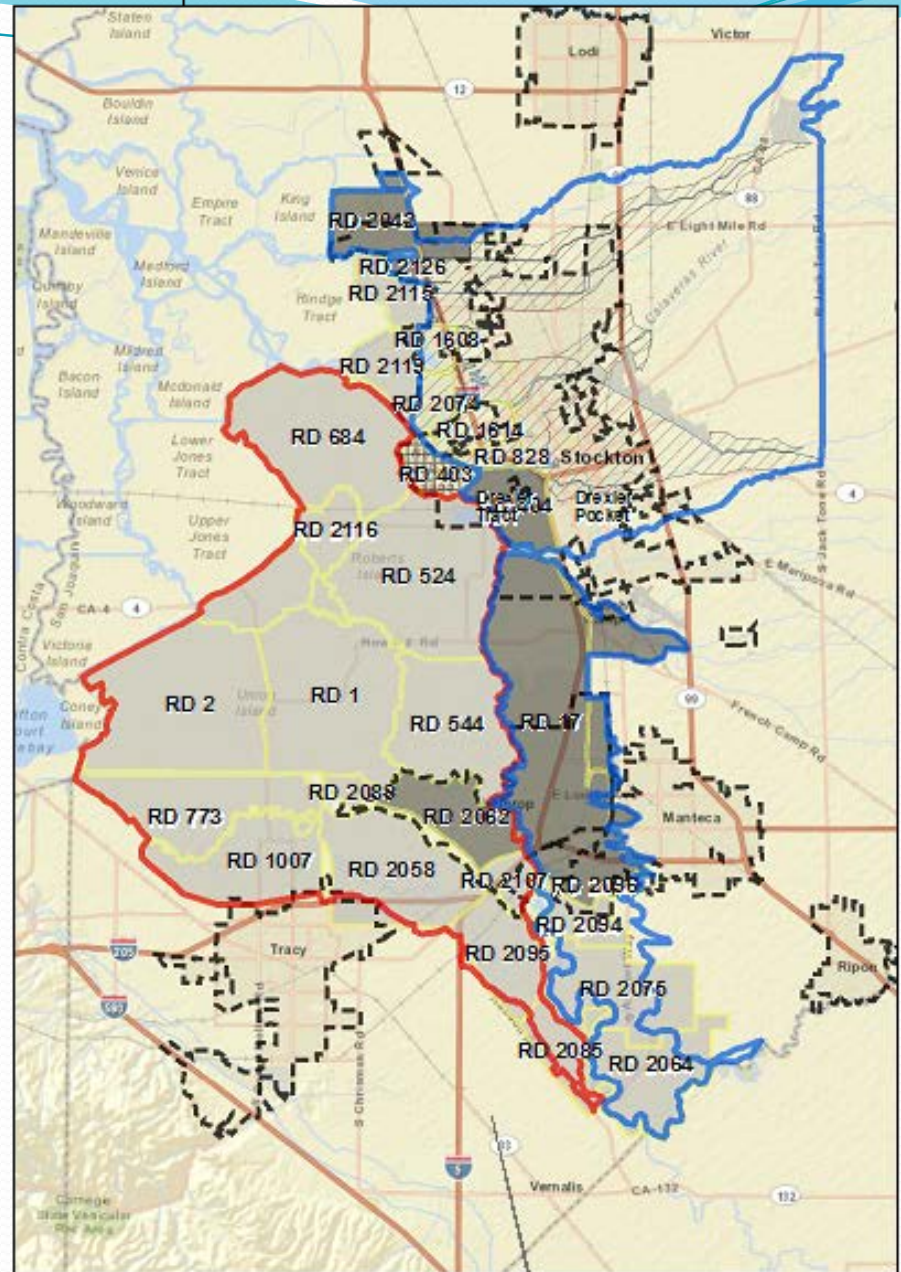
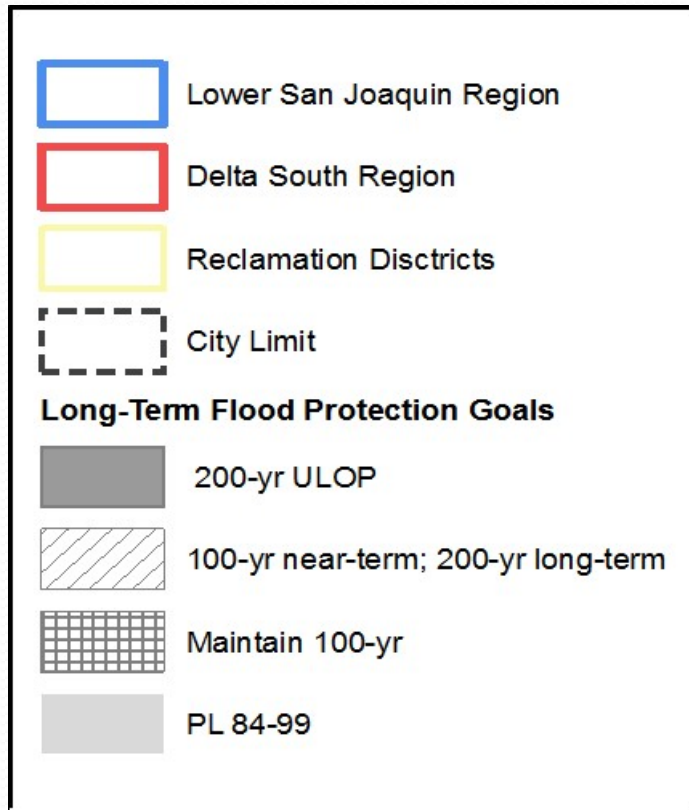




# Status Overview

1. Small Group Meetings Complete
2. Working on Admin. Draft RFMP
3. Target Levels of Protection (LOP)
4. Array of LMA-Specific Projects
5. Preview of Estimated Costs

# Target LOP

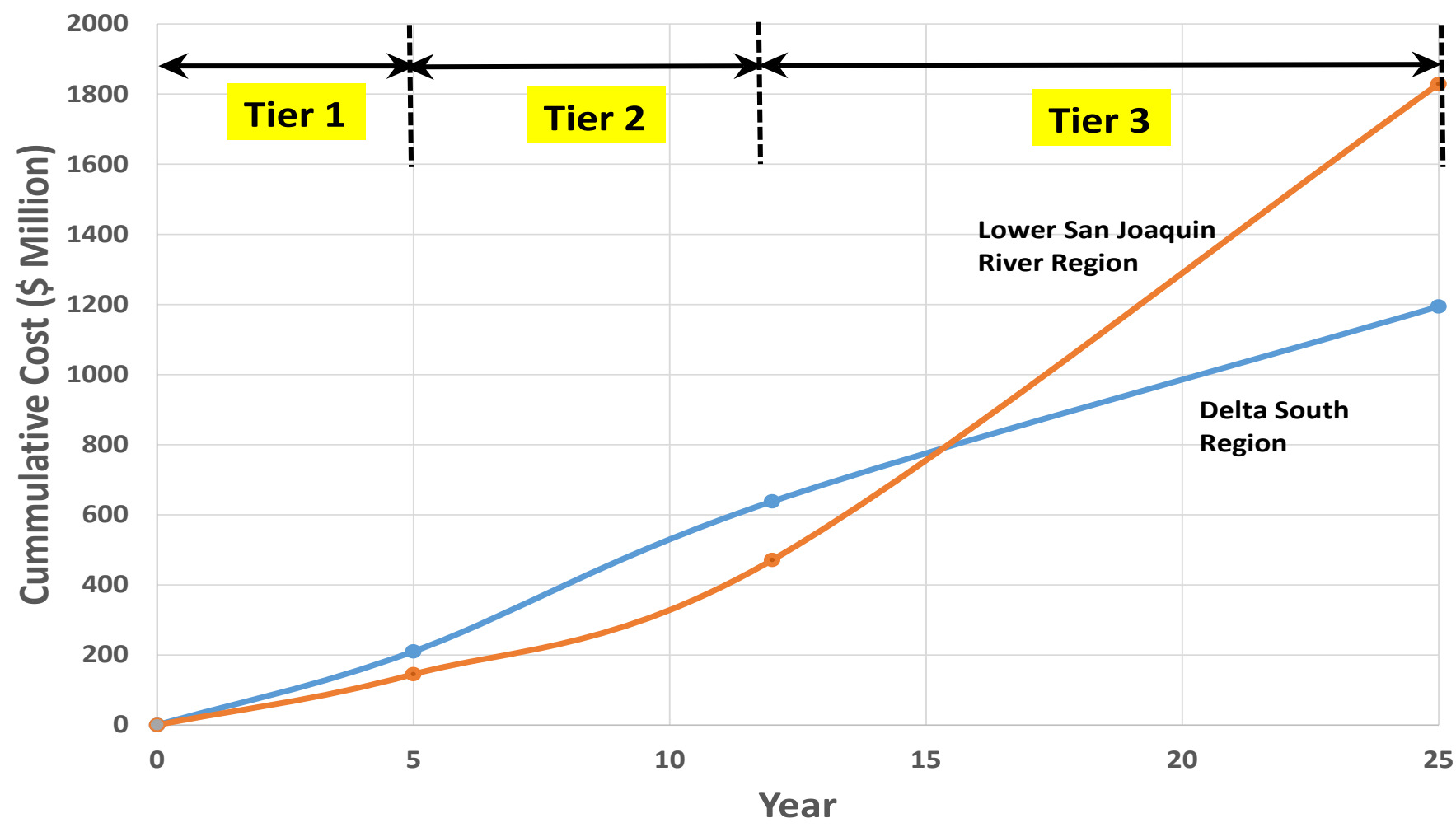








# Estimated Costs Over Time



# RFMP Estimated Costs vs. SSIA

		Estimated Costs in \$ Millions	
		SSIA	RFMP <sup>1</sup>
<b>Delta South Region</b>			
	System Improvements	\$427 to \$549	\$337
	Urban Improvements	\$0 to \$0	\$170
	Rural Improvements	\$47 to \$52	\$574
	Residual Risk Management	\$110 to \$135	\$112
	Total Costs	\$584 to \$736	\$1,193
<b>Lower San Joaquin River Region</b>			
	System Improvements	\$7 to \$8	\$94
	Urban Improvements	\$626 to \$809	\$1,395
	Rural Improvements	\$17 to \$19	\$176
	Residual Risk Management	\$82 to \$97	\$164
	Total Costs	\$732 to \$933	\$1,829
<b>Total Estimated Costs for Both Regions</b>		<b>\$1,316 to \$1,669</b>	<b>\$3,022</b>

<sup>1</sup> Estimated cost for RFMP are plus or minus 20 percent

DRAFT

# What to expect in the Next Few Months

- SJAFCA admin. draft RFMP (end of August 2014)
- DWR/public draft RFMP (early September 2014)
- 2<sup>nd</sup> Paradise Cut Symposium (Sept. 11<sup>th</sup>, 2014; 9–noon; Location TBD)
- Final RFMP (late October 2014)

*Please remember to submit your in-kind expenses to Gemma Biscocho*

*[Gemma.Biscocho@Stocktongov.com](mailto:Gemma.Biscocho@Stocktongov.com)*



# Questions & Comments